

# XANTÉ X-121



## Ready For The Big Leagues?

CAN FIT THROUGH  
ANY DOORWAY!

**Larger 60" x 121" Full Bleed!**

**PRINT ON VIRTUALLY ANY MEDIA!**

CMYK + WWW

UP TO 2880 DPI RESOLUTION

PHOTO-REALISTIC COLOR

15-UP SIGN PRODUCTION

PRINT ON MEDIA UP TO 3 INCHES TALL

POWERFUL DUAL LED LAMPS

(Instant Ink Curing)



Ultra-Wide Gamut Eco-UV Inks



251.473.6502

**xante.com**

# BIGGER THAN EVER

## Our Largest ECO-UV Flatbed Printer

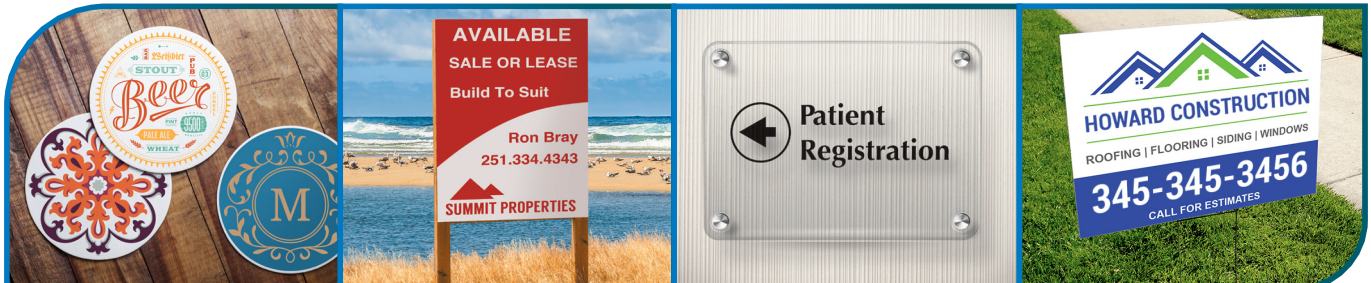
*Designed for shops that are serious about growth. Go BIG with high-volume, large sign production. From durable outdoor signage to indoor photo-realistic UV prints, the X-121 can handle anything you throw at it. The 5'x10' full bleed bed is large enough to handle your biggest jobs.*



*If you need to print one huge sign, or up to 15 yard signs at once, the X-121 is the ultimate machine to exponentially increase your production potential.*

The Xanté family of X-UV Printers provide  
**POWER** and **SPEED!**

**Signage ■ Manufacturing ■ Specialty Items ■ Industrial**



## Optional Roll-fed Attachment and Cutter



The 48-in. roll-fed attachment and multi-use cutter for X-55, X-98 and X-121 UV flatbed printers adds greater capability and flexibility to your UV flatbed.

Take advantage of the flatbed design to cut a variety of media, including vinyl, acrylic, paper, and more.

Increase your ROI, become more efficient and serve creative new market trends.

CONTACT US TODAY FOR MORE INFORMATION.

**251.473.6502**



# Powered by iQueue



## RIGHTON Patented Spot Color Matching System

RightON® color matching technology makes spot color matching simpler than ever. Our unique ability to print swatch pages on your media gives you amazing accuracy and iQueue easily saves colors for future use and consistency. With RightON® you can also edit any spot color with CMYK, HSV or RGB color controls.

## PANTONE® Color Library

The iQueue spot color database includes the PANTONE® Color Library. This provides access to PMS color builds when using Right-On.



## Welcome to the iQueue Workflow

iQueue is so powerful and easy to use, you'll wonder how you ever got along without it.

Xanté continues to speed up your workflow with time-saving innovations and features.

iQueue is constantly updated and improved, and upgrades come *at no cost to you*.

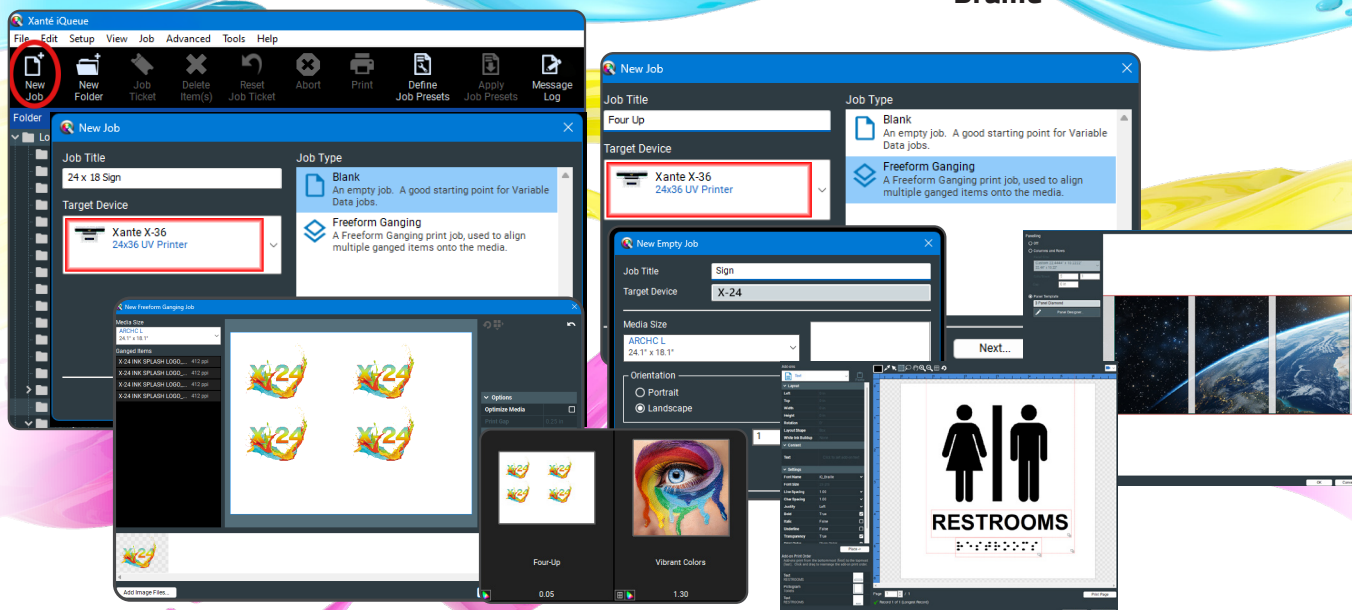
Creating a new job is as easy as dragging in a file. Built-in features mean that you can manipulate images, remove backgrounds, add text and texture, gang-up images and more **right in iQueue**. So you can achieve your desired results even if you don't have a team of tech-savvy designers. If you do, our shared folder system ensures everyone can work together quickly and efficiently.

## Loaded With Features!

Job Sharing via Shared Folders  
Sequential Numbering  
Imposed Stack Order Printing  
Full Imposition  
Hundreds of Design Templates

Full-Speed Variable Data  
Royalty-Free Specialty Fonts  
Advanced Barcoding  
QR Code Creation  
Fully Independent CMYK Controls

Accurate Job Costing  
Multipart Forms Creation  
White Frosting  
Paneling  
3D Texturing  
Braille





## SPECIFICATIONS



### PRINTING CAPABILITIES

Imaging area:	60" x 121" (152cm x 307cm)
Max. media size:	60" x 121" (152cm x 307cm)
Min. media size:	.5" x .5"
Max. print height:	3" (7.62cm)
Print colors:	CMYK + WWWW
Resolution:	720/1080/1440/2160/2880 DPI Resolutions
UV lamp:	Dual LED, low heat curing lamps

### INK AND MEDIA

Ink type:	UV, 500 mL bottles per color The maximum shelf life is 1 (one) year from Date of Manufacture (DoM). Once opened, the shelf life is 2 (two) months or 1 (one) year from DoM, whichever comes first.
Media types:	PVC plastic, styrene, wood, aluminum, metal, acrylics, coroplast, ceramics, fabric, leather composites, paperboard, foamboard, glass, carpet, tile and more

### PRINTER CONNECTIVITY

1-Gigabit Ethernet

### PREPRESS SOFTWARE

Xanté iQueue Workflow:	Adobe® PostScript® 3™/PDF Workflow, Independent CMYK Density Control, Spot Color Matching, Imposition, Digital File Editing, Variable Printing, and much more
------------------------	---

### WEIGHTS, DIMENSIONS

Dimensions:	157"L x 87"W x 49"H (399cm x 221cm x 125cm)
Net/Gross weight:	1,390 lbs (631 kg)
Power supply:	110v or 220v 50-60hz

### WORKING CONDITION

Operating temperature:	22-26°C (68°F - 78°F)
Relative humidity:	35-75RH

**XANTÉ**  
251.473.6502  
[xante.com](http://xante.com)

  
**Adobe® PostScript® 3™**



iQueue Simply Brilliant  
Workflow (Included)  
Digital Color Workflow with Advanced Color  
Matching and File Management Tools