



KONICA MINOLTA

# SEE THE POTENTIAL OF OUR NEXT GENERATION LABEL PRESS

RETHINK LABEL PRINTING



**Accurio***Label* 400

Narrow web digital color label press

Giving Shape to Ideas

# INTRODUCING THE ACCURIOLABEL 400

## KONICA MINOLTA'S NEXT STEP IN LABEL PRINTING

Label converters and commercial printers are faced with an increasing number of print jobs for small to medium runs, which they are expected to produce in ever-shorter processing times. With conventional flexo and offset printing, it is virtually impossible to produce such orders profitably. Flexible digital printing, however, allows producing short-run jobs easily with a maximum efficiency.

The AccurioLabel 400 is the consequent next step in Konica Minolta's successful journey in the digital label printing segment and will complement the AccurioLabel 230, one of the top-selling digital label presses in United States. Label converters and professional print providers with higher print volumes benefit from higher print speeds, white toner, longer print runs and user-friendly automation tools.

The AccurioLabel 400 offers outstanding productivity, brilliant image quality and surprising ease of use. This is your answer to the challenge of shorter delivery times, personalization and versioning as well as instant production of on-demand print runs – which makes it your perfect tool to use in conjunction with existing analog equipment and to diversify into new markets.



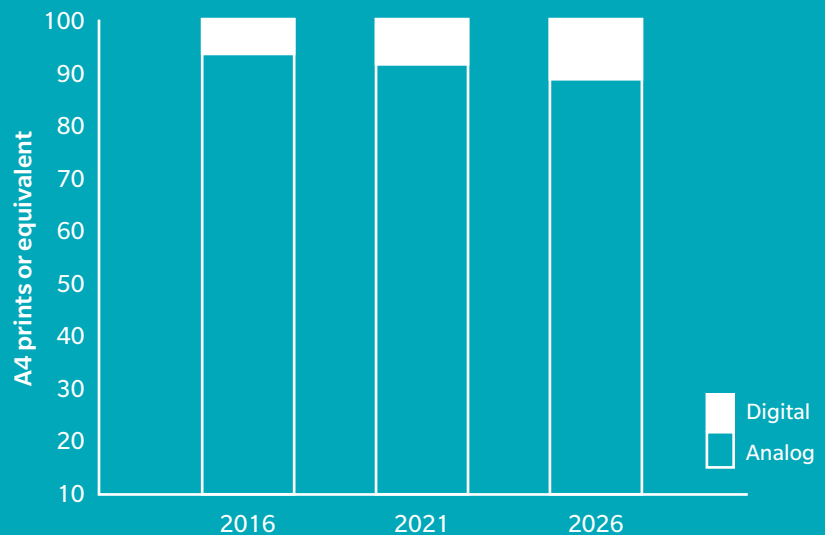
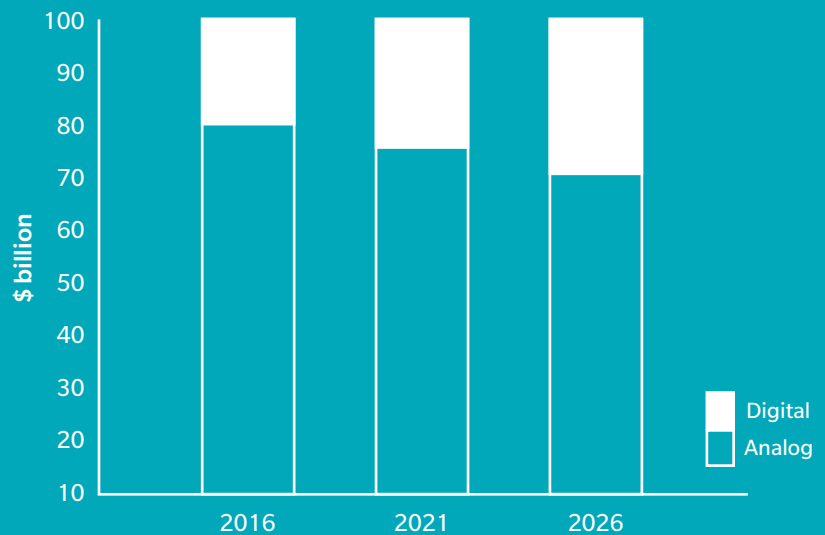
# MARKET TRENDS

## GROWTH MARKET: DIGITAL CONTINUES TO CONQUER THE LABEL PRINTING MARKET

The label printing market is considered one of the market segments that will continue to grow in the future. According to recent surveys, the majority of new, narrow-web label presses installed worldwide is digital.

The global printed label market was valued at \$41.75 billion in 2021 and is expected to grow at rates of around 6% per year.

Evolution of digital print shares, 2016–2026 (%)



Source: The Future of Printed Labels to 2026, Smithers Pira

The global market for digitally printed labels **grows at more than**

**6 %** per year.

In 2022,

**45 %**

of the worldwide narrow web label press installations will be digital.

More than

**50 %**

of label converters have digital machines.

# ALL NEW FEATURES AT A GLANCE

## RETHINK LABEL PRINTING



### HIGH PRODUCTIVITY

#### Printing speed

- Maximum print speed of AccurioLabel 400 is 130 ft per minute when printing in CMYK mode and to 65 feet per minute when printing CMYK+W
- Print speed may also vary depending on selected media types (130, 112, 98, 65 or 49 feet per minute)

#### Higher run lengths

- Total length per job can be set to max. 3,000 linear meters
- Unwinder and rewinder of AccurioLabel 400 each have a capacity for rolls of 800 mm in diameter
- Larger toner hopper (reservoir) for uninterrupted production

#### Selectable controller

- Superb price-performance ratio:  
IC-611 (Konica Minolta)
- High productivity for VDP: IC-320L  
(Kodak Creo - Optional)

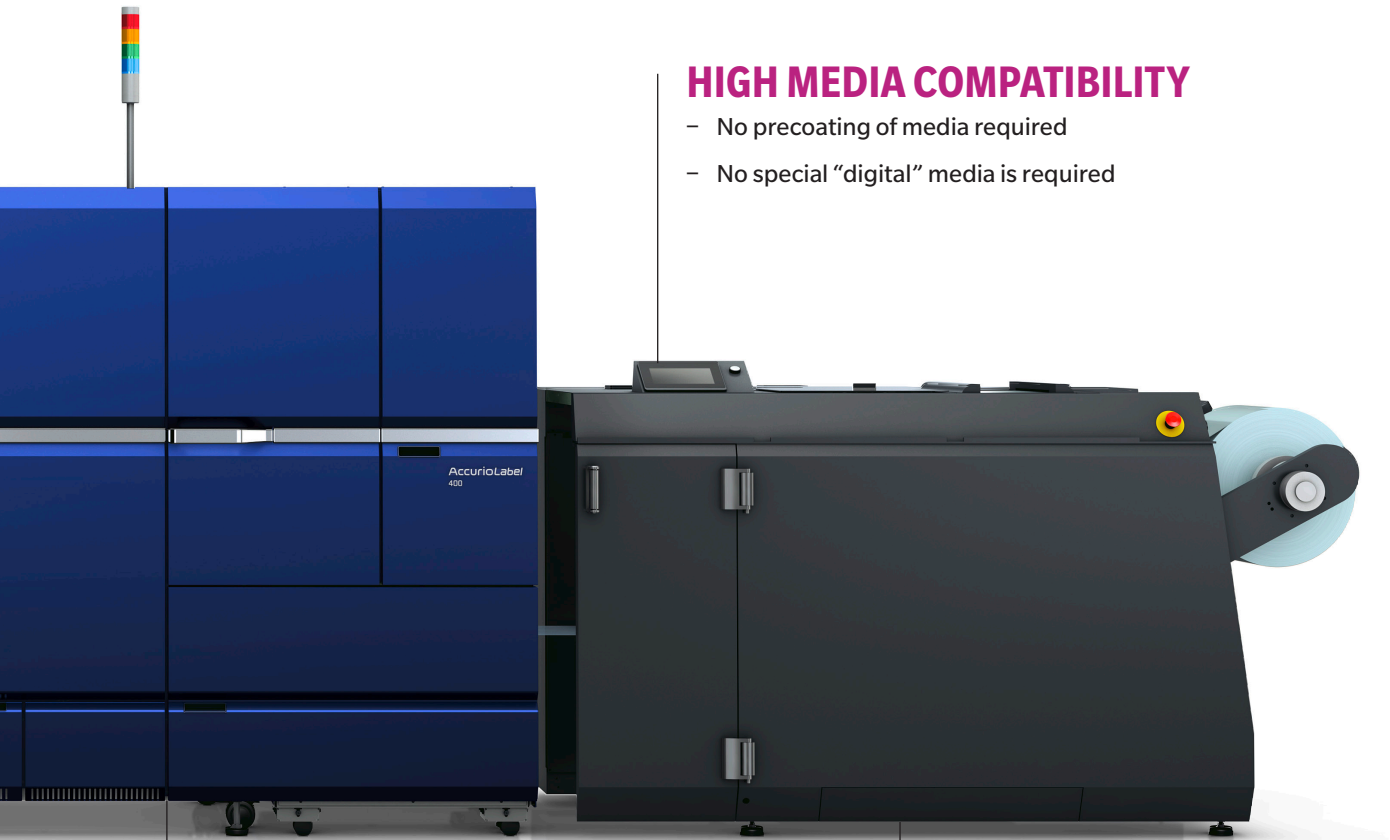
### PRINT JOB VARIETY

#### New 5th color station with white toner

- The capability of printing white enables you to cover a wider range of print applications
- High level of white opacity with one imaging hit

#### Overprinting

- AccurioLabel 400 comes standard with overprint sensor kit
- Registration of print jobs to pre-printed media is now possible whenever needed



## HIGH MEDIA COMPATIBILITY

- No precoating of media required
- No special “digital” media is required

## EASE OF USE

### AccurioPro Flux with Label Impose

- PDF-based workflow tool
- Combine and impose label jobs with Flux Label Impose, using templates (ideal for changing print layouts with similar die plates)
- Adding eye-marks, arranging artwork, gang-up printing of different layouts and exporting die-lines through a single intuitive user interface
- Easily apply variable data printing (VDP) functionalities with just a few mouse clicks

### Intuitive touch panels

- AccurioLabel 400 is operated from the main touch panel of the print engine as well as easy-to-use touch screens for unwinder and rewinder
- A tablet can be used instead of the main touch panel to operate freely around AccurioLabel 400

## OUTSTANDING QUALITY

### Resolution on a par with offset

- Excellent resolution of 1,200 dpi (3,600 dpi equivalent) x 2,400 dpi produces a high-precision print image

### Intelligent Quality Optimizer

- Real-time color stability control
- Real-time color registration control
- Automatic calibration
- Automatic density adjustment
- Profile creation



# Flux Label Impose

## RETHINK WORKFLOW

For reasons of efficiency and economy, label-manufacturing printers need to automate and integrate their workflow as much as possible. Equally important is the optimized use of media to avoid any waste of label material. This is why multiple labels are usually imposed across the width and length of the label web – a process that can easily become a complicated and time-consuming procedure if performed manually.

The Flux Label Impose software tool offers the perfect solution to this challenge: the application provides a simple and intuitive user interface for the automatic imposition and preparation of label jobs for printing.



## KEY FEATURES

### Job editing

- **Automatic creation of label repeats:**  
The application facilitates and automates the creation of label repetitions on the label web.
- **Variable data content:** The processing of variable data content is simple and straightforward and can easily be incorporated into the automatic label repetitions.
- **Personalization:** Adding of VDP content from CSV file as text, barcode and QR code
- **Adjustable spacing:** Operators can freely and individually adjust the spacing between columns and rows as required.
- **Adding standard and custom eye marks:**  
The application offers complete flexibility in adding standard and custom eye marks in any desired position for offline finishing.
- **Arranging artwork:** Users can choose between automatic and manual arrangement of artwork for the label layout.
- **Gang-up printing:** A single sheet can be imposed with just one or various selected artwork motifs.
- **Die cutting tools:** With the ability to detect additional separations (die lines, spot varnish, foil, etc.) and export them to PDF, Flux Label Impose facilitates the production of the die cutting tools and enables additional decorations on labels.
- **Preflight:** Checks PDF files for missing fonts, images with a resolution too low and transparencies to avoid printing problems.

# TYPICAL APPLICATIONS

## LABEL SUBSTRATES

Glossy or matte adhesive paper, PET and PP. An extended list of supported substrates from the major vendors of self-adhesive media is provided upon purchase of the AccurioLabel 400.



### BEVERAGES

Create personalized and unique labels.



### FOOD

For short to medium production of labels for local produce.



### WINES & SPIRITS

Create wonderful labels for wines and spirits simply by producing great quality on untreated textured papers.



### COSMETICS

Private label products, ...



### HOUSEHOLD

Allows for easy production of different versions of the same label.



### INDUSTRIAL

For GHS labels, chemical products, identification, ...

# ENABLING NEW PRINT APPLICATIONS.

The newly added 5<sup>th</sup> color station with white toner can be used for a broad range of applications. The high opacity white adds “no-label look” layouts to the range of print products possible with AccurioLabel 400.







## SEE THE POTENTIAL.

The “no-label look” can be creatively combined with subtle designs, using the combination of process colors and selected use of high opacity white.



# RETHINK WHAT LABELS CAN DO FOR YOUR BUSINESS.

With white toner, you can now create stunning label designs with colorful and shimmering effects on metallic substrates – like here for coffee beans.





# THE LABEL PRINTING BUSINESS IS VIBRANT, DYNAMIC AND INCREDIBLY EXCITING.



The use of white toner opens up amazing new possibilities for creative label design – as shown here for wine bottles.



# REALIZE THE POTENTIAL.

The demand for more sustainable label production is increasing – rightly enough. With the capability of printing on plant-based substrates, the organic food and cosmetic sectors can be supplied with prints from AccurioLabel 400.







## IGNITE YOUR PRINT POSSIBILITIES.

Same goes for the huge sector of wine labels: With sustainable label substrates – such as grass paper – AccurioLabel 400 makes your label designs stick out with high quality combinations of CMYK elements, white toner and embellishment with varnish and foil effects. Digital label printing has been on the rise during recent years, and we see print volumes growing even more in the future.

**We are here to create new label opportunities together with you. Please contact us for more information.**

# 10 GOOD REASONS

to change from an analog workflow to digital label printing with the AccurioLabel 400.



## 1. PERSONALIZE YOUR OUTPUT

Konica Minolta's AccurioLabel 400 lets you print variable images and text, fully integrated into your digital workflow. Imagine the many ways in which personalized label printing can help your business.



## 2. HANDLE MULTIPLE SKUs

Short runs of different labels are easy and quick to produce, with no additional prep-time and make-ready. Short-run printing can be more effective and profitable.



## 5. MINIMAL FOOTPRINT

The AccurioLabel 400 is a compact digital label press with just 12' separating the unwinder and the rewinder, so that it will fit into the tightest of spaces on your production floor.



## 6. IMPROVE CONSISTENCY

Complete color management control ensures consistency across the substrate from the beginning to the end of your entire press run.



### 3. SHORTEN YOUR LEAD TIMES

With no prepress setup time, personalized labels can start printing without delay.



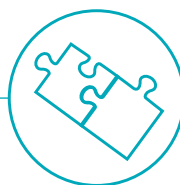
### 4. LOWER YOUR COSTS

Think about it: Less waste, zero plates used, minimal labor requirements – it all adds up to lower running costs and increased profitability.



### 7. SIMPLIFY YOUR OPERATION

Digital control is far simpler than that of conventional analog systems – and you can queue jobs right from your touch screen control panel, making reprints faster and more cost-effective.



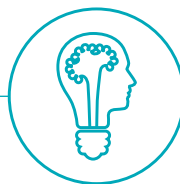
### 8. COMPLEMENTARY TO YOUR EXISTING PRESSES

The AccurioLabel 400 perfectly complements your analog and digital production flow, allowing you to shift even higher print volumes to your digital output stream.



### 9. HIGHER PRODUCTIVITY

Larger roll capacity, longer print runs, ease-of-use and effective automation tools make your label printing a no-brainer.



### 10. GET ON THE INSIDE TRACK OF INNOVATION

By partnering with Konica Minolta, you leverage the power of our cutting-edge innovations in digital production, backed by our market leadership for digital label presses in the US.

# TECHNICAL SPECIFICATIONS

## RETHINK LABEL PRINTING

### SYSTEM SPECIFICATIONS

Technology	Dry Toner Electrophotography
Color	CMYK, white (optional)
Resolution	Main scan: 1,200 dpi (3,600 dpi equivalent) Sub scan: 2,400 dpi (8 bit)
Tone scale	256 steps (8 bit), 16,700,000 colors
Paper widths	13" fixed (standard), 10" to 13" selectable (replacement of certain parts necessary)
Max. printed image width (length)	12.6" (50.9")
Media thickness (weight)	76 to 270 µm (62 to 256 g/sqm)
Supported substrates	Paper, PP, PET (tack or non-tack, incl. textured paper, film etc.)
Printing speed	130 ft/min. (CMYK), down to 65 ft/min. (CMYK+W), 130, 112, 98, 65, 49 ft/min. depending on media types
Machine dimensions (W x D x H)	24.6' x 4.0' x 5.5'
Machine footprint (W x D)	31.8' x 10.5' (incl. operating space)
Machine weight	3,968 lbs.
Web control	Integrated web guide system (BST) on infeed section and rewinder
Max. roll diameter	31.4" (unwinder and rewinder)
Shaft diameter	3 inches

### CONTROLLER

Konica Minolta Controller	IC-611
Kodak (Creo) Controller, optional	IC-320L

### POWER & AIR SUPPLY

Print engine	3x 200-240 V, 25 A, 1-phase, 50-60 Hz
CCU	1x 110V-127V, 6A, 50-60 Hz
Winders	1x 200-240 V, 32 A, 1-phase 50-60 Hz (incl. 300 mA RCCB, Type A)
Compressed air	6 bar, min. 20 l/min., 8 mm tube diameter

- The support and availability of the listed specifications and functionalities varies depending on operating systems, applications and network protocols as well as network and system configurations.
- The actual life of each consumable will vary depending on use and other printing variables including coverage, size, media type, ambient temperature and humidity.
- Specifications are subject to change without prior notice, please refer to technical documentation for site inspection.
- Konica Minolta does not warrant that any specifications mentioned will be error-free.
- All brand and product names may be registered trademarks or trademarks of their respective holders and are hereby acknowledged.



Learn more at  
**ReThinkPrint.com**



**KONICA MINOLTA**

KONICA MINOLTA BUSINESS SOLUTIONS U.S.A., INC.  
100 Williams Drive, Ramsey, New Jersey 07446

**CountOnKonicaMinolta.com**



Item #: ACCURIOLABEL400BRO  
3/2023-Z